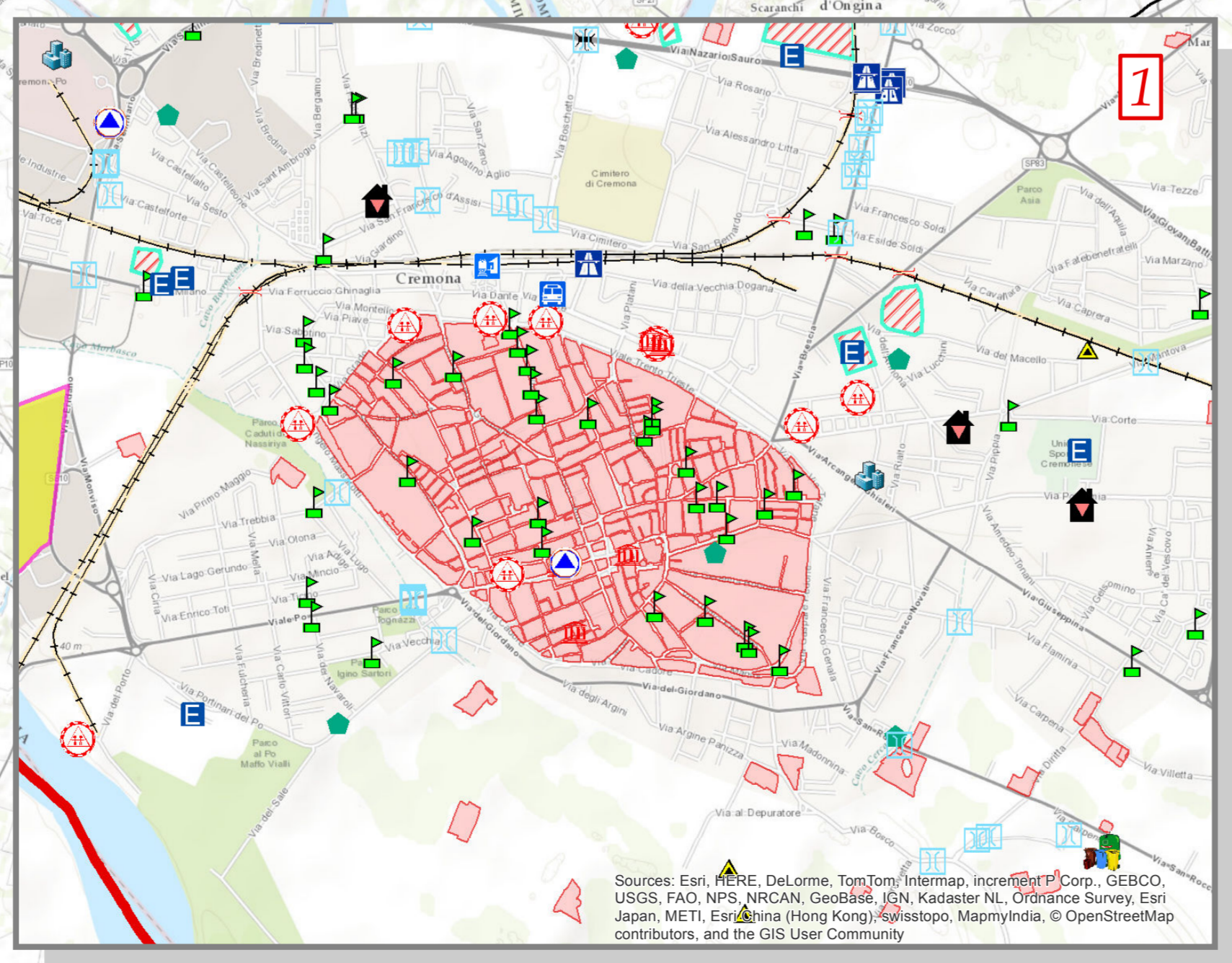
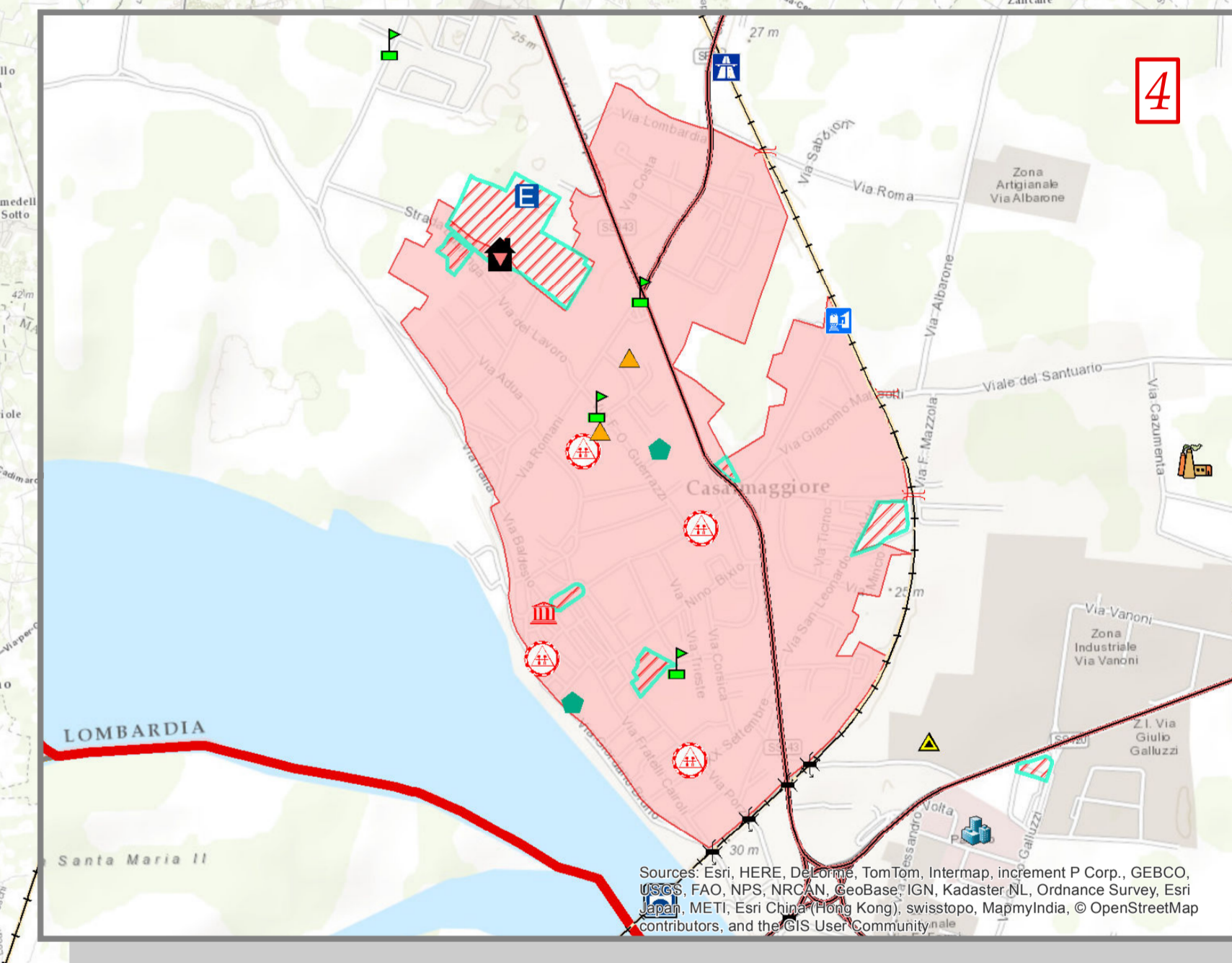
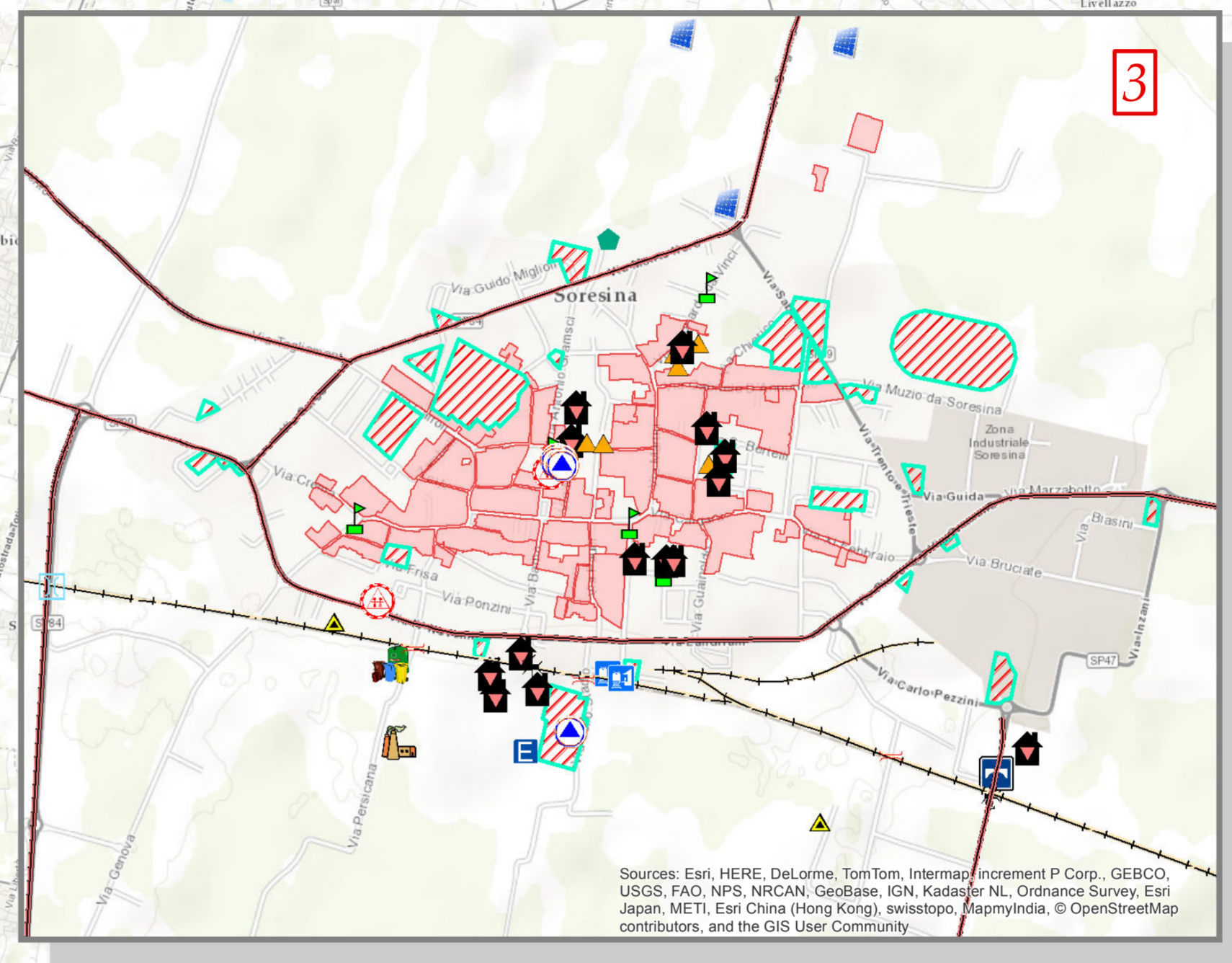
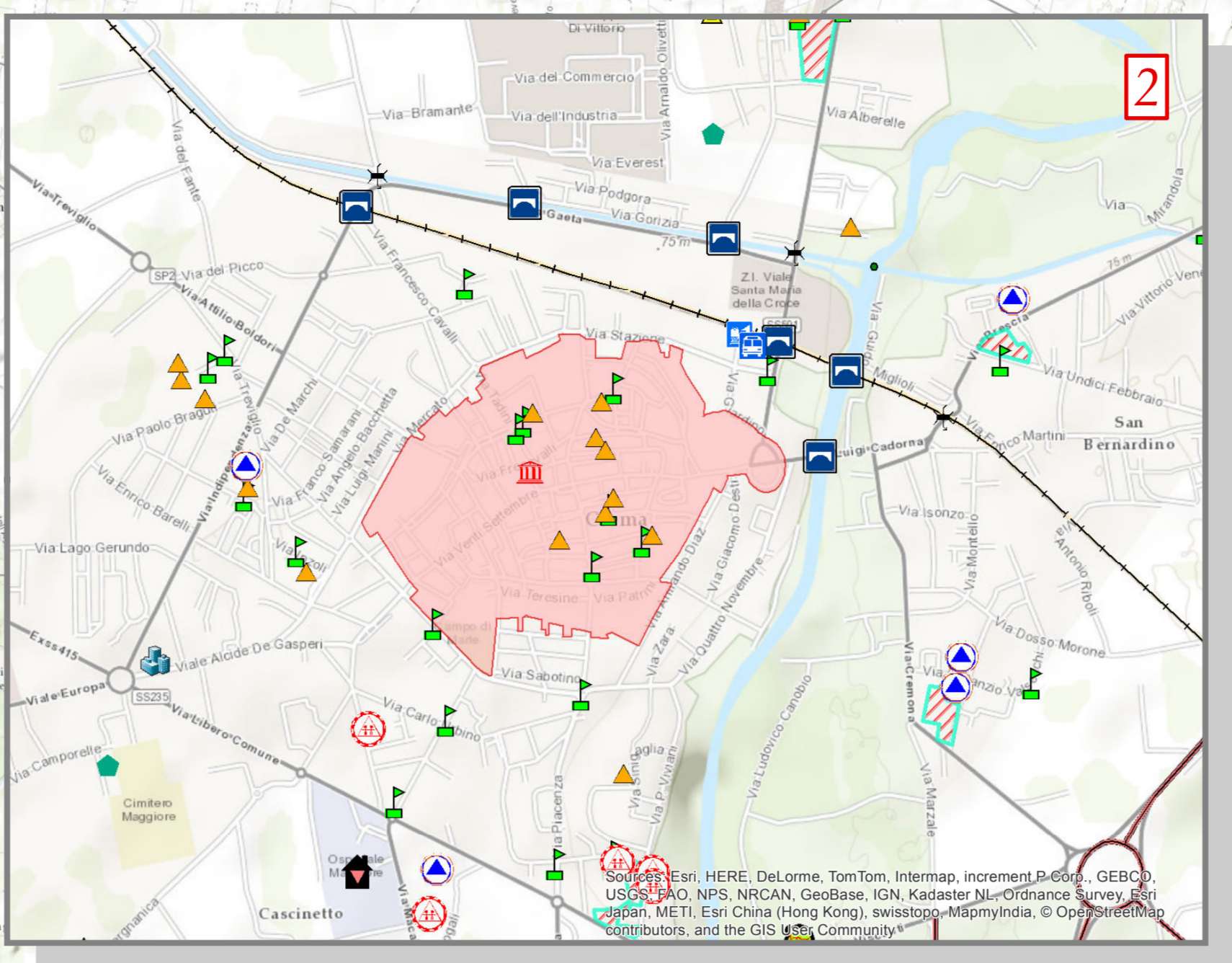


- 1 CREMONA
- 2 CREMA
- 3 SORESINA
- 4 CASALMAGGIORE

  
**Settore Ambiente e Territorio**  
**Piano di Emergenza Sismica del territorio provinciale**  
**Carta Scenari**  
 approvato il  
  
 1:80.000  
  
 Ottobre 2016  

Source: Esri, HERE, DeLorme, TomTom, Intermap, increment P Corp., GEBCO, USGS, FAO, NPS, NRCAN, Geobase, IGN, Kadaster NL, Ordnance Survey, Esri Japan, METI, Esri China (Hong Kong), Swisstopo, Mapbox, and the GIS User Community